

1.5 tonne

Electric

Counterbalanced Stacker



Godrej



About us

For over 110 years, Godrej has been a company India can count on. For soaps and locks. For hair colour and refrigerators. For furniture and safes. For pressure vessels and aerospace engines. For storage and forklifts. How have we stood the test of time? We adapt. We advance. We keep in step with the rhythm of our times. But our evolution has never been at the cost of the great good things Godrej has always stood for: Trust, Integrity and Humility. Our remarkable past distinguishes us from others. But we know that we owe the future our sincerest best. We are only as good as what we do next.

Recognized. Dependable. Respected. These three words aptly describe Godrej Material Handling. Over 45 years ago, Godrej built India's first indigenous forklift truck. Today we are the undisputed market leader for lift trucks in India. Operating out of a 12,000 sq.m. manufacturing facility in the western port city of Mumbai, we deliver a wide range of forklift trucks, warehouse trucks and attachments for specialized applications.

The Godrej Electric Counterbalanced Stacker

The Godrej Electric Counterbalanced Stacker with AC drive offers all the versatility of a counterbalanced rider forklift and the economy and small aisle capability of a pedestrian stacker. You can think of it as a walk-behind counterbalanced forklift truck with a wide scope of application in your factory or warehouse:

- Handling all the tasks that can be managed by smaller equipment but would otherwise tie up your more expensive forklifts
- Operating in racking systems or close to machinery that do not permit the use of straddle type stackers
- Working with various types of closed as well as open pallets

The AC drive control offers a powerful, safe, power saving package that is virtually maintenance free. The GCS with its full-function control handle does not require the high skill required to operate sit down rider forklifts and can thus be learned and proficiently used by almost anybody. Like all Godrej lift trucks, safety is paramount and the GCS incorporates numerous electrical and hydraulic safeties to keep your people, goods and property safe. Read on to find out how powerful, versatile and profitable the Godrej Electric Counterbalanced Stacker really is.

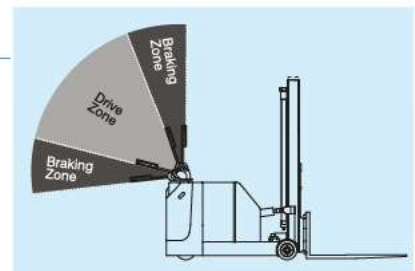
AC Drive Unit

- Front line AC drive control technology provides an ultra smooth command over truck travel
- AC traction motors draw virtually 50% of the current drawn by equivalent DC traction motors, thereby conserving a huge amount of energy
- AC motors generate less heat than DC motors, reducing energy losses
- AC motors are brushless and therefore virtually maintenance free
- Imported, fully integrated drive unit with AC traction motor, gear box and drive wheel form a harmonized, perfectly tuned drive package



Braking System

- An electromagnetic brake is integrated with the traction motor output shaft
- This brake is automatically applied by the electronic traction controller whenever the control arm is brought to within 15° of the fully vertical or fully horizontal positions known as 'braking zones'
- The electromagnetic brake acts as a parking brake whenever the stacker is left with the control arm in vertical position. This prevents the stacker from running away even if parked on a slope
- 'Ramp hold' facility allows the operator to safely start the stacker from standstill even if it is parked on a slope
- The fail-safe brake engages immediately and brings the equipment to a halt in case of any loss of electrical power





Control Handle

- The control handle is constructed from fibre reinforced plastic for antistatic properties
- The control arm is centrally mounted on the stacker body, making it equally convenient for left and right handed operators
- Full function control handle contains twin sets of switches within finger reach of both hands for all functions including forward/reverse travel, forks raise/lower and mast front/back tilt
- Antipinning button is located at the end of the control handle, closest to the operator. It gets easily pressed if the operator is pinned between the stacker and an obstacle like a wall or rack. When actuated, the stacker gets automatically pushed in the opposite direction by a short distance and stops, thus preventing any injury to the operator
- The horn is also located on the control handle, within finger reach of the operator's hands

Clear View Mast

- Forward / backward tilt of the mast is a standard feature on all Godrej GCS models
- Well arranged vertical sections and cross tie bars of the mast provide clear forward visibility through the mast for safe and comfortable operation
- Forged and heat treated hook mounted forks can be easily adjusted across the carriage and locked in position depending on the fork pocket spacing on your pallets



Hydraulic System

- The hydraulic system is a self-contained power pack fully equipped with
 - ✓ Heavy duty, high speed 3kW DC motor and pump assembled as an integral unit
 - ✓ Immersion of the pump in the oil tank boosts system efficiency by eliminating suction side flow losses in hoses and pipe bends
 - ✓ Spool type hydraulic control valve with built-in check and relief valves for efficient overload protection of lift and tilt cylinders
 - ✓ Pressure compensating flow control valve in the hydraulic circuit regulates lowering speed for safe operation - heavier the load, slower the lowering speed
 - ✓ Tilt lock valve
- Hose burst valve located in the mast immediately arrests dropping forks in the event of hose failure ensuring safety of the load, the machine and the operator



Electrical System

- 24V electrical system
- 1.2 kW AC traction motor
- High capacity 516 Ah traction battery maximizes uptime between charges
- Series wound, high speed 3kW DC pump motor
- Heavy duty pump contactor with replaceable tips
- Safety of control and power circuit components ensured with fuses
- All wiring is colour-coded for ease of service and troubleshooting
- Battery discharge indicator with lift lockout disables lift and tilt functions and permits only travel when the battery is discharged by 80% of its full capacity. This is a safety measure and also serves as a reminder to the operator to place the battery for charging



Standard Equipment

- Robust chassis optimally designed with ProE design software for balancing ruggedness with a light construction
- Imported, fully integrated drive unit with AC traction motor, gear box and drive wheel
- Polyurethane drive and load wheels guarantee a good grip on the ground and positive traction.
- Front rigid axle and rear single drive wheel guarantee 3-point contact with ground to ensure stability
- Electromagnetic brake on traction motor with 'ramp hold' facility
- Clear view duplex mast with full free lift and triplex mast options
- Forward / backward mast tilt
- Centre mounted control arm with full function control handle and twin sets of switches
- Programmable MOSFET traction controller with 20,000 switching cycles per second provides ultra smooth control of the drive unit
- 24V, 516 Ah traction battery (5 hour rate of discharge)
- Battery roll-out facility for quick and easy battery changes
- Battery discharge indicator with lift lock out
- Mushroom button for emergency shut down
- Antipinning button at the end of the tiller arm for operator safety
- Well integrated hydraulic system for smooth, energy efficient operations
- Key switch and horn



Optional Accessories

- Electronic battery chargers with 8 or 12 hour charging cycles
- Operator platform for applications where the operating cycle includes longer travel distances
- Load back rest for safe handling of loosely palletized items
- Flashing beacon
- Rear view mirror
- *MicroLift* - a special electronic package for super smooth and precision handling of the load
- The controller can be specifically programmed to customize the equipment's performance to suit various applications and provide enhanced capabilities such as brake override, lift slowdown, different travel speed, etc.

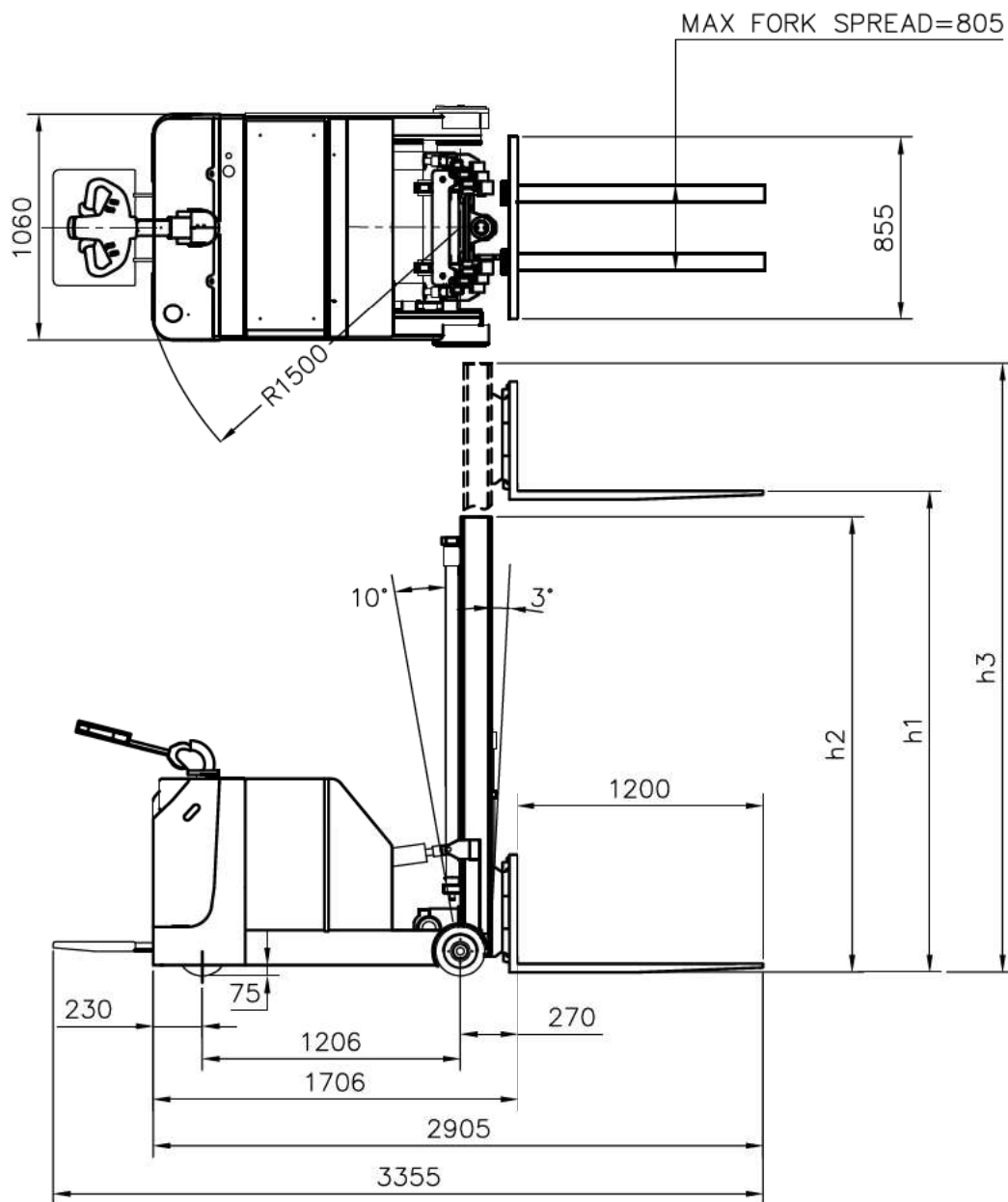
| TECHNICAL SPECIFICATION | | | |
|---|-------------------|---------|----------------|
| Description | | | GCS 15 |
| Load Capacity | | Kg | 1500 |
| Load Center | | mm | 600 |
| Fork Length | | mm | 1200 |
| Travel Speed | Laden | Kmph | 5.5 |
| | Unladen | Kmph | 6.0 |
| Lift Speed | Laden | m/sec | 0.11 |
| | Unladen | m/sec | 0.11 |
| Lowering Speed | Laden | m/sec | 0.24 |
| | Unladen | m/sec | 0.08 |
| Gradeability | Laden | percent | 7% |
| | Unladen | percent | 11% |
| Overall Length w & w/o Platform | | mm | 3355 / 2905 |
| Overall Width | | mm | 1060 |
| Wheels | Drive Wheel | mm | Ø 230 X 83 PU |
| | Load Wheels | mm | Ø 230 x 100 PU |
| Ground Clearance | Chasis | mm | 75 |
| Turning Radius w/o & w Platform (With Pallet) | | mm | 1500 / 1950 |
| Right Angle Stacking Aisle width, w/o & w platform (With Pallet) | 800(W) x 1200(L) | mm | 3190 / 3640 |
| | 1000(W) x 1200(L) | mm | 3215 / 3665 |
| | 1200(W) x 1200(L) | mm | 3250 / 3700 |
| Weight of the truck without battery | | kg | 2250 |
| Weight of the battery | | kg | 450 |
| Motor Details | | | |
| Drive Motor | | | AC 1.2 KW 24 V |
| Pump Motor | | | DC 3 KW, 24 V |
| Battery Details | | | |
| Type | | | Lead Acid |
| Volts | | | 24 V |
| Battery Capacity | | | 516 AH |

NOTE: All dimensions and specifications indicated above are subject to a variation of ± 15%. Godrej products and specifications are subject to improvement or change without notice.

Colours shown in the catalogues are indicative colours. Our Standard Colour is Traffic Yellow and Jet Black.

*The image shown in the leaflet are representative. Actual equipment may differ in colour and optional accessories.

| TECHNICAL SPECIFICATION | | | | | | |
|-------------------------|---|------------------------------|-------------------------------------|-----------|------------------------------------|----------------------|
| Model | Mast Type | Max. Fork Height MFH (h1) | Overall Height Lowered OAHL (h2) | Free Lift | Overall Height Raised OAHR (h3) | Capacity in kg @ MFH |
| GCS 1530 | 2 stage clear view mast without free lift | 3000 | 2155 | NIL | 3635 | 1300 |
| GCS 1533 | | 3300 | 2305 | | 3935 | 1200 |
| GCS 1536 | | 3660 | 2485 | | 4295 | 1100 |
| GCS 1546 | | 4600 | 2955 | | 5235 | 800 |
| GCS 1530 | 2 stage clear view mast with full free lift | 3000 | 2175 | 1530 | 3605 | 1500 |
| GCS 1545 | 3 Stage clear view mast with full free lift | 4500 | 2080 | 1600 | 5010 | 850 |



MATERIAL HANDLING

GODREJ & BOYCE MFG. CO. LTD.

Plant 16, Pirojshanagar, Vikhroli, Mumbai 400079
 • Tel.: +91 22 6796 4660 / 73 • Fax: +91 22 6796 1519
 • E-mail: mhemktg@godrej.com • url: http://godrejmh.in

Overseas Branch and Service Centre,

SAIF Zone, P. O. Box 8549, Sharjah, U.A.E.
 • Tel.: 00 971 65570866 • Mob.: 00 971 504629701
 • Fax: 00 971 65570966 • E-mail: vinod@godrej.ae

Branches & Service Centres

- Mumbai : 022 67961725 / 67961291
- Pune : 020 66255121-22 / 6625531-32
- Ahmedabad : 079 66060646 / 66060701 / 66060606
- Indore : 0731 5069335 / 2532917
- Chennai : 044 66544431-32
- Bangalore : 080 66472251
- Kochi : 0484 6612777 / 4060600-31
- Hyderabad : 040 66431203
- Vizag : 0891 2517930 / 2746511-2-3
- Delhi : 011 66507340 / 50
- Chandigarh : 0172 5012525 / 5037736-37
- Jaipur : 0141 6701441/2
- Lucknow : 0522 6454961 / 6454888-999
- Kolkata : 033 66013771-76
- Bhubaneshwar : 0674 2583810 / 2580609

Represented by:

UNO 06 / 09 REVISION: 00